

The Bulletin

Of the Deep South District Of the American Rose Society

Spring 2021

Volume 60:1



District Director's Report



By Cindy Dale, *Master Rosarian*
881.742.4996-lrosepro@bellsouth.net

District Director's Message for December 2020

The holidays looked a lot different for most of us in 2020 but I hope they were still a time of peace, joy, and celebration in whatever form they took for your family. Now it's time to crank up the pruners,

loppers, wheelbarrows and everything else we need to get the new growing season off to a good start. I hope you were able to get all the new roses that were on your list. This is the time to make good use of your society's Master and Consulting Rosarians as well as other resources like our DSD website, www.deepsouthdistrict.org, the ARS website, www.rose.org, our DSD newsletter, and our district's Facebook page.

Hopefully, your local society Presidents have been keeping you updated on all the DSD news I've been sending out to them. If so, you already know that our Executive Board had a Zoom meeting a few weeks ago and made the hard decision to cancel our in-person March Mid-Winter Meeting since it was just too risky. This is a disappointment for all of us but **I can now tell you the exciting news that DSD Vice Director, Ray Guillebeau; Chris Van Cleave; and I have arranged a Zoom Mid-Winter Meeting on March 27th from 10:00 to 2 p.m. EDT!** Ray lined up two fun and educational speakers for us – Dr. Mark Windham on rose diseases and Suzanne Horn on David Austin roses. Paul Colombo will present the 2020 DSD Photo Contest winners and I will give an ARS update and award some very special DSD honors. I hope all of you will make it a priority to be there as we gather as a district for the first time since January 2020.

| In This Issue | |
|-----------------------------|----|
| Director's Report | 1 |
| VIRTUAL Mid-Winter | 3 |
| Roses in Review | 4 |
| Starting Bare Roots in Pots | 6 |
| Horticulture Judges | 9 |
| Thomasville Rose Show | 10 |
| Arrangement Judges | 11 |
| Consulting Rosarians | 12 |
| DSD Treasurer Report | 13 |
| What's New on the Web | 14 |
| ARS Membership | 16 |
| DSD Officers & Chairs | 17 |
| Up Coming Events | 18 |

I hear things are going well with the ARS Great Garden Restoration. The first circle has been planted with roses. The second circle is now fully funded thanks to a very generous donation by Marilyn Wellan. The fourth circle is also fully funded based on completion of the rest, so that only leaves the third circle to be built. The International Rose Trials are underway and a new watering system has been installed. So many exciting things are happening! Please send your local society and personal donations to ARS throughout the year so we can get this done.

ARS will be having an election for officers this summer. No other candidates for DSD Director came forward for the 2021-2024 term so it looks like I'll be running unopposed again. Thanks to my officers and committee chairs who have already agreed to continue on with me. However, our CR Chair, Linda Schuppener, will be stepping down and I really need a CR or MR to take over for her. PLEASE let me know if you can help out the District in this way.

Here are two important reminders.

1. Please get your \$25.00 DSD dues into Kay Harrell as quickly as possible. The deadline is May 30th but sooner is always better.
2. If you're having a rose show this year please rewrite your schedules to comply with the new rules eliminating most disqualifications and incorporating the three new optional shrub classes if you want to use them. The rewritten schedules need to be sent to Joanne Maxheimer (Horticulture) and Sandy Dixon (Arrangements) to get their approval prior to your show. If you need help with the wording let Joanne or Sandy know. Thomasville RS is planning to go ahead with their 100th Rose Show on April 23-24th so try to support them by exhibiting, judging, or just visiting if you can.

Let's keep finding creative and safe ways to still be able to hold our usual spring activities such as pruning clinics, garden center outreach, rose shows, and more. I know many of our societies are taking this opportunity to have world renowned, online speakers that they could never have in person. Use this as a time to reconnect with each other and the public by sharing our love of the rose!

See you at the virtual DSD Mid-Winter Meeting on March 27th!





Join us for our first VIRTUAL Mid-Winter Meeting for the Deep South District of the American Rose Society. We will kick things off at 10 a.m. ET and will have a fun time with news, guest speakers and our annual awards presentations. Do not miss this opportunity to re-connect for so many of your rose friends from around the Deep South District.

Schedule of Events:

- 10:00 – Intro & Zoom features – Chris VanCleave (co-host)
- 10:15 – Welcome and ARS Update – Cindy Dale, DSD Director
- 10:45 – Mark Windham – Rose Diseases
- 11:30 – Break
- 11:45 – Suzanne Horn – David Austin Roses
- 12:30 – DSD Photography Awards – Paul Columbo
- 1:00 – DSD Awards – Cindy Dale
- 2:00 -- Dismiss

Please click the link below to join the meeting at the appropriate time. You may join using a laptop/desktop or your mobile device if you have the zoom software downloaded.

Most updated devices have built in speakers and microphones, you can however, use the dial in numbers listed for audio. If you select this option, please mute your viewing device to prevent feedback on the microphone.

Topic: Deep South District – Mid Winter Meeting

Time: Mar 27, 2021 10:00 AM Eastern Time (US and Canada)

Join Zoom Meeting

<https://us02web.zoom.us/j/87017280397>

Meeting ID: 870 1728 0397

One tap mobile

+19292056099,,87017280397# US (New York)

+13017158592,,87017280397# US (Washington DC)

Dial by your location

+1 929 205 6099 US (New York)

+1 301 715 8592 US (Washington DC)

Meeting ID: 870 1728 0397

Roses in Review

By Cindy Dale, *Master Rosarian*

The results of the 2020 ARS “Roses in Review” (RIR) program have been released and they continue to show mediocre statistics for our District with 7 out of 18 Districts having better participation than we did. To elaborate, a total of 93 DSD members contributed 208 reports on 86 rose varieties and we thank you for that. However, this amounted to only **15% of our membership** that chose to take the small amount of time to rate the roses they grow and enlighten other rosarians as to the good and not-so-good roses on the market today. Consulting and Master Rosarians are highly encouraged to participate in the review process as part of their duties but only 56 out of 93 CRs or MRs did for a 60% participation rate. I will remind you that some years ago a block was added to the survey that you could check if you grow none of the reviewable roses and this counts as participation for our District so I encourage you to use that for the 2021 RIR if needed. Also, the ARS Executive Director is working hard to make the online review process easier every year.

The reports which are included with this newsletter are from our own reviews and specific to DSD. They include: garden ratings, exhibition ratings, how many reports each variety got; how many years it was grown; typical plant height (short, medium, tall); blackspot susceptibility; mildew susceptibility; and fragrance – all important information that can help us when making decisions on our rose purchases this spring.

When the next Handbook for Selecting Roses comes out you will see only garden ratings that have been averaged across all ARS districts but, with our table, you will have much more information that is specific to our growing conditions at your fingertips. Thanks again to those who participated and I urge more of you to consider doing this when the call comes out this year.

| Count | Cultivar | Garden | Exhibition | Years Grown | Blackspot | Mildew | Winter Hardy | Fragrance | Height |
|-------|------------------------------------------------|--------|------------|-------------|-----------|--------|--------------|-----------|--------|
| 4 | “Peggy Martin” (The Katrina Rose) HMult, mp | 9.0 | 7.7 | 4 | Slight | None | Yes | None | Tall |
| 1 | Above and Beyond LCI ab | 7.0 | 7.0 | 1 | Moderate | None | Yes | None | Tall |
| 3 | Abracadabra F, rb | 8.0 | 8.0 | 3 | Slight | None | Yes | light | Tall |
| 8 | All My Loving HT, dp | 7.9 | 7.7 | 2 | Slight | None | Yes | light | Medium |
| 1 | Angel Grace MinFI, ly | 9.0 | 9.0 | 2 | Moderate | None | Yes | None | Medium |
| 3 | Arctic Blue F, m | 9.0 | 8.3 | 1 | Slight | None | Yes | light | Tall |
| 12 | Aristides MinFI,ab | 7.3 | 7.5 | 2 | Moderate | None | Yes | None | Short |
| 1 | Bathsheba LCI ab | 9.0 | 9.0 | 2 | None | None | Yes | | Tall |
| 1 | Beautiful Dreamer HT, pb | 6.0 | 7.0 | 3 | Slight | | Yes | | Short |
| 5 | Belinda’s Blush S lp | 7.4 | 6.7 | 2 | Slight | None | Yes | light | Medium |
| 3 | Blake Hedrick HT, mr | 8.7 | 8.0 | 3 | Moderate | None | Yes | light | Tall |
| 3 | Bob Martin Min dy | 9.0 | 9.3 | 2 | Slight | Slight | Yes | light | Short |
| 2 | Bordeaux F, mr | 8.5 | 7.0 | 2 | None | None | Yes | light | Medium |
| 1 | Brick House F, mr | 9.0 | 8.0 | 1 | None | None | | None | Short |
| 3 | Burst of Joy F, ob | 8.3 | 7.0 | 3 | Slight | Slight | Yes | Moderate | Medium |
| 3 | Call Me Beautiful HT, pb | 6.5 | 6.5 | 2 | Slight | None | Yes | light | Short |
| 1 | Canadian Shield S dr | 10.0 | 9.0 | 3 | None | None | Yes | | Medium |
| 3 | Celestial Night F, m | 8.7 | 8.0 | 2 | Slight | None | Yes | None | Medium |
| 2 | Children’s Hope Pol, mr | 9.0 | 8.0 | 2 | Slight | None | Yes | None | Medium |
| 4 | Clair Elyse HT, or | 8.3 | 8.0 | 3 | Moderate | None | Yes | None | Tall |
| 1 | Court of Honor HT, mr | 8.0 | | 1 | None | None | | light | Medium |
| 2 | Crazy Love S, ob | 7.5 | 8.0 | 1 | Slight | None | | Moderate | Tall |
| 1 | Desdemona S w | 8.0 | 8.0 | 1 | Slight | None | | Moderate | Medium |
| 1 | Dream Catcher MinFI rb | 8.0 | 7.0 | 1 | Slight | None | | None | Medium |

| | | | | | | | | | |
|----|--------------------------------|------|------|---|----------|--------|-----|----------|--------|
| 2 | Easy on the Eyes S, m | 8.5 | 7.0 | 3 | None | None | Yes | None | Medium |
| 4 | Easy Spirit F, w | 8.3 | 7.7 | 3 | Slight | None | Yes | light | Medium |
| 1 | Easy to Please F, mp | 9.0 | 7.0 | 2 | None | None | Yes | light | Short |
| 2 | Eyeconic Mango Lemonade S ab | 9.0 | 9.0 | 2 | Slight | None | Yes | light | Tall |
| 1 | Ffion Min, ab | 8.0 | 7.0 | 2 | Slight | None | | None | Medium |
| 1 | Fiji HT, dp | 8.0 | 8.0 | 3 | Slight | Slight | Yes | light | Medium |
| 2 | Foxy Lady F, r | 7.5 | 7.0 | 3 | Slight | None | Yes | light | Tall |
| 6 | Frida Kahlo F, rb | 7.4 | 7.0 | 2 | Moderate | None | Yes | None | Medium |
| 3 | Gaye Hammond S, yb | 6.3 | 6.3 | 3 | Slight | None | Yes | None | Short |
| 1 | George Manners S, dr | 7.0 | | 2 | Slight | None | Yes | None | Short |
| 1 | Grateful Heart HT, rb | 7.0 | 10.0 | 1 | Moderate | None | | light | Medium |
| 1 | Gypsy Soul HT, dr | 9.0 | | 1 | None | None | | light | Tall |
| 2 | Harlow Carr S mp | 7.5 | 8.0 | 2 | Slight | None | | Moderate | Medium |
| 1 | Honey Bee Haven F, op | 9.0 | 6.0 | 2 | Moderate | None | | Heavy | Medium |
| 1 | Honey Bee Kind Gr, my | 6.0 | 6.0 | 2 | Moderate | None | | light | Tall |
| 10 | Hot Prince HT, rb | 8.1 | 8.1 | 2 | Slight | None | Yes | light | Medium |
| 2 | Hours Change Min or | 9.5 | 8.5 | 2 | Slight | None | Yes | light | Medium |
| 1 | Hugs & Kisses Min ly | 8.0 | 9.0 | 2 | Moderate | None | Yes | None | Short |
| 1 | Imogen S ly | 9.0 | | 2 | Slight | None | | light | Medium |
| 1 | In Your Eyes S, yb | 8.0 | 7.0 | 2 | None | None | Yes | light | Short |
| 1 | King Kong HT ab | 7.0 | 8.0 | 2 | Slight | Slight | | light | Short |
| 1 | La Park F ab | 7.0 | 6.0 | 3 | Slight | None | Yes | light | Medium |
| 2 | Lady in Red LCI, dr | 8.5 | 7.5 | 2 | Slight | None | Yes | light | Tall |
| 1 | Lauren Leigh HT, pb | 8.0 | 8.0 | 4 | Moderate | None | Yes | light | Tall |
| 3 | Le Petit Prince HT, m | 8.0 | 7.7 | 2 | Slight | Slight | Yes | Moderate | Medium |
| 1 | Life's Little Pleasures Min, m | 8.0 | | 1 | None | None | | light | Short |
| 1 | Little Grey Pearl Min, m | 8.0 | 7.0 | 2 | Moderate | None | Yes | light | Short |
| 4 | Little Queen MinFI, pb | 8.0 | 8.3 | 2 | Moderate | None | Yes | None | Medium |
| 1 | Love at First Sight HT, rb | 7.0 | | 1 | Slight | None | | light | Medium |
| 1 | Loving Mom HT, ab | 7.0 | 7.0 | 2 | Slight | None | | None | Medium |
| 1 | Marilyn Moore S, ly | 7.0 | 7.0 | 3 | Moderate | None | Yes | light | Tall |
| 1 | Miss Shelby HT, pb | 9.0 | 9.0 | 2 | Slight | None | Yes | light | Medium |
| 1 | Oh Happy Day Gr ab | 9.0 | 9.0 | 1 | Slight | None | Yes | light | Tall |
| 1 | Old Tappan MinFI op | 9.0 | 7.0 | 2 | Slight | None | Yes | light | Medium |
| 1 | Orange Parfait Min, ob | 8.0 | 8.0 | 2 | Slight | None | Yes | None | Short |
| 4 | Parade Day Gr, pb | 7.5 | 7.3 | 2 | Slight | None | Yes | Moderate | Medium |
| 1 | Peach Swirl HT, ab | 7.0 | | 2 | Moderate | | Yes | light | Medium |
| 2 | Pinkerbelle HT pb | 10.0 | 6.0 | 2 | None | None | Yes | Heavy | Tall |
| 1 | Pretty Polly Lavender Pol, m | 10.0 | | 1 | None | None | | light | Short |
| 2 | Pretty Polly White Pol, w | 8.0 | 7.0 | 2 | None | None | | None | Short |
| 1 | Promises S pb | 9.0 | 7.0 | 2 | None | None | Yes | None | Medium |
| 26 | Ring of Fire HT, ob | 8.7 | 9.0 | 2 | Slight | None | Yes | light | Medium |
| 2 | Ringo S, yb | 7.5 | 7.0 | 1 | Slight | None | Yes | light | Short |
| 2 | Roald Dahl S ab | 8.5 | 7.0 | 2 | Slight | None | Yes | Moderate | Tall |
| 2 | Rosie the Riveter F ob | 8.0 | 7.0 | 3 | Moderate | None | Yes | light | Medium |
| 1 | Royal Kate HT, lp | 10.0 | 9.0 | 3 | Slight | None | | Moderate | Tall |
| 1 | Simply Magnificent Gr, m | 7.0 | 7.0 | 1 | Slight | None | | Moderate | Short |
| 1 | Soaring to Glory F dy | 8.0 | 8.0 | 1 | None | None | Yes | light | Medium |
| 2 | State of Grace Gr, yb | 7.0 | 6.0 | 1 | Moderate | None | | light | Medium |
| 1 | Stiletto HT, dp | 8.0 | 7.0 | 1 | None | None | Yes | Heavy | Medium |
| 2 | Sweet Casandra Min, rb | 7.5 | 7.5 | 2 | Slight | None | Yes | light | Medium |
| 1 | Sweet Jane F, dy | 8.0 | 8.0 | 1 | Slight | None | | Moderate | Medium |
| 3 | Sweet Mademoiselle HT pb | 7.7 | 7.0 | 2 | None | None | Yes | Moderate | Medium |
| 2 | Sweet Spirit Gr, rb | 7.5 | 7.0 | 2 | Slight | None | Yes | Moderate | Short |
| 1 | Tangerine Skies LCI ob | | | 1 | None | None | | | |
| 1 | The Ancient Mariner S mp | 8.0 | 8.0 | 2 | None | None | Yes | Heavy | Medium |
| 2 | Toots MinFI, pb | 8.0 | 8.0 | 4 | Slight | None | Yes | light | Tall |
| 1 | Top Gun S mr | 10.0 | 10.0 | 3 | None | None | Yes | light | Medium |
| 1 | Vanessa Bell S, ly | 9.0 | 9.0 | 2 | Slight | None | | light | |
| 1 | Vernon's Laugh MinFI pb | 7.0 | 7.0 | 2 | Slight | None | Yes | light | Tall |
| 3 | Violet Hour Min, m | 9.3 | 9.0 | 2 | Slight | None | Yes | light | Medium |
| 7 | Violet's Pride F m | 8.3 | 8.4 | 2 | Slight | None | Yes | light | Medium |

Starting Bare Roots in Containers

By Robert B. Martin Jr., ARS President



January is the time to start bare root roses in the Southwest and information abounds on how to plant them in the ground. But there is a better way to start a bare root rose – in a container. Most people are not even aware this is an option but it is and it is the way I start all of my bare root roses. So, let me explain why in case you'd like to do the same.

Advantages

The advantages to starting bare root roses in containers are many and include the following:

Less Commitment

Roses are particularly susceptible to differences in microclimates, which means simply that a rose may do better in one place in your yard than in another. Also, it is difficult to tell in advance exactly how tall the rose will grow in your yard and whether the color of its blooms will be harmonious with its neighbors. Planting roses in containers provides the opportunity for you to evaluate it in a particularly exposure and then to easily move it to another if that seems useful. In the process you can learn where it will perform best before committing it to the ground. You might also learn it is simply a crummy rose. By starting the rose in a container, it becomes a much easier matter to send it to a place that it deserves.

Less Competition

Roses do not like competition from other plants. This is because they are heavy feeders and other plants, including neighboring roses, often deprive them of nutrients and room for their roots to grow. Roses also do not like shade and planting a new rose between established roses often results in the rose being deprived of sunlight as its taller and more established neighbors leaf out. Planting a new bare root rose in the ground in an established rose bed is like trying to start a new tree in a forest – it is tough for it to ever catch up to its neighbors. However, by planting a rose in a container the nutrients can be delivered to the rose alone, its roots can freely develop and it can be placed so that it does not have to compete with its big brothers for sunlight.

Less Soil Problems

The rose literature has for years spoken of a problem called “soil sickness”. New roses may do poorly when they are planted in a spot where roses have grown before. But there is little agreement with respect to the reason for the problem; some blame nutrient loss, others nematodes, and others fungal growth in the ground. Others theorize that the planting spot has been invaded by tree roots or has otherwise become less favorable for a rose. (I personally believe the problem has more to do with the failure to remove all of the old rose roots that have displaced the soil and harbor fungal infections). Be that as it may it is clear that planting in

containers provides the opportunity to use a fresh clean planting medium that will assure the new rose will not have to deal with soil problems while becoming established.

It is also clear that light well-aerated soil is the best environment in which to encourage root development. The prime and initial directive for a bare root rose is to develop a good root system. By planting a bare root rose in a container you can use a light planting medium that the roots can easily invade. This is much better than forcing the rose to set its roots in the heavy clay soil that is common to the Southwest.

Also, when roses are planted in a hole dug in heavy soil the result will often be the “bathtub” effect. Water applied to such roses does not drain well into the surrounding soil thus leaving the rose in a bathtub full of water. The roots of a rose need oxygen to breathe or they will literally drown. This is why good drainage is so important to root development and it is easy to get good drainage in a container.

Easier Care

Another advantage to starting roses in containers is that it is easier to care for them. Nutrients and water can be applied more exactly and there is easier access to the entire bush for spraying. The container lifts the rose off the ground, which permits a higher access and the ability to easily turn the rose around. In particular access to the undersides of the leaves, which on young plants would otherwise be too close to the ground, is improved.

How to Do It

The technique of container planting is relatively simple and can be best understood by keeping in mind the advantages described above. Here’s how –



Container Selection

The key to container selection is to provide the rose with adequate but not excessive room for root development. A rose sets its root system well before putting on much top growth; it is in fact the root system that supports the top growth. Yet top growth should be encouraged as well so that you will have some idea at an early date of what the rose will look like. For large roses the preferred starting container is a 5-gallon plastic container. You can also use a 7-gallon container for a very large rose. Such containers are available for a modest price at most local nurseries; if you are a good customer some nurseries will give you their used containers.

Planting Medium

The preferred planting medium for starting roses in containers is light, loose and full of organic matter. I make my own which is simply a mixture of two parts potting mix and one part #2 perlite. The best potting mix is usually something available locally since much of the cost of a potting mix is in its transportation. I currently prefer Happy Frog® Potting Soil from Fox Farm Soil & Fertilizer Company, which has earthworm castings, bat guano, and aged forest products, all said to be alive with beneficial microbes and fungi that help break down organic matter and

feed the plant roots. There are many other potting mixes, including various soilless mixes that are commercially available, so look around and find something you like. I do not use soil or compost in the planting medium because it can harbor harmful fungal disease or bacteria.



Rose Preparation

The bare root rose should be prepared for planting in much the same manner as if it were to be planted in the ground. Soak the rose up to its neck for 48-72 hours in a trashcan or large bucket full of water. I generally add Grow More 7437 Jump Start Plant Tonic, which contains a combination of amino acids, micronutrients, vitamins and “growth factors” in the formula. This is also the place where you can try other magical root stimulants that you may have read about. Whether such products actually work is not certain but I think they may and can do no harm.

Prior to potting up the rose the roots should be examined and obvious broken ones removed. Clip off the end of a few of the fatter ones to promote lateral growth and shorten any that are much too long to fit conveniently in the container. (In this regard you should err on the side of leaving the roots as they are; if you are uncertain about the size leave them alone).



Container Preparation

I used to put down a layer of redwood chips or pottery at the bottom of the container in order to prevent the planting mix from running out the holes. I no longer do this because pottery can plug up the holes and the chips tend to rot at the bottom. So, instead I put a layer of pure potting mix, or perhaps a heavier planting mix, at the bottom and tamp it down. You should then add a layer of the planting medium and poke several depressions in it with your fingers. Fill the depressions with superphosphate or bone meal. Use about 1/4 cup of the superphosphate with a large rose.

The objective here is to keep the superphosphate in a lump or pile. (There is a possibly good reason for this – phosphates are important to root development but tend to bind to adjoining soil and become unavailable to the roots). Then you should put down another layer of planting mix. Place the rose in the container and arrange the roots in a circle and then fill the container with the planting mix holding the rose firmly at the desired level. Shake the container and poke the mix with your gloved fingers to settle the mix; then add water to settle it further.



After the water has drained refill any obvious holes with planting mix and then pour on a gallon or so of the solution used to soak the rose.

Later....

Having committed to planting the rose in the container you must plan to keep it in the container until the roots have totally involved the medium. When this occurs, the rose can be easily removed from the container with the root ball intact. However, if you remove the rose prematurely you will be unable to maintain the root ball and the soil will fall off damaging the fibrous root system that initially develops. As a general rule a rose planted in a container in January should not be removed from the container until early June. At this time, it can be easily planted in the ground. More often, I leave the rose in the pot for fall planting or for transplanting to a larger pot. This gives you all the time you could need to evaluate the rose and it is this flexibility that makes starting roses in containers a very useful idea.

Horticulture Judges Chair



By: Joanne Maxheimer

229-403-1419

iamjomax@rose.net

A big thank you to Bruce Monroe who has conducted on line classes during this time of COVID -19 restrictions. Bruce has encouraged anyone that wants to participate to do so; you don't have to be a horticultural judge to take part in these classes. Several of our DSD members have done just that and credit hours have been given. Bruce has sent me those hours and I have recorded them. I also just received word from our District Director Cindy Dale that the ARS Executive Board has extended requirements for all judges to an additional year. Again, this is due to the COVID-19 preventing most of us from having any kind of meetings or schools.

A decision on where to place Ramblers in your show has been finalized. After much input it was decided that Ramblers will be judged in with climbing roses. I don't grow any ramblers, but for those of you that do this is where they are to be exhibited.

The weather here in South Ga., is starting to get warmer and it's time to think about cutting back your roses for a beautiful spring flush. Most of us will be cutting back starting around the 14th of February weather permitting. So, get all your pruners, loppers and other tools sharpened and ready to go.

I met with the City of Thomasville on the 27th of January and they are planning to go ahead with our 100th Rose Show. The date is April 23rd and 24th. The city is planning to go all out for this event and I encourage any of you that would like to exhibit to please come and join us. So far, I believe we are the only society having a show this spring. We will be using CDC guidelines so all exhibitors will be required to wear a mask as well as everyone participating in the show. So mark your calendar and help us celebrate. If for some reason the city does decide to cancel, I will let Bet and Sara know so they can get the word out to all presidents.

Stay safe and get your vaccine as it becomes available.

Joanne Maxheimer

Thomasville Rose Show

Thomasville Rose Society is having their 100th Rose Show on the 23rd and 24th of April, this is a Friday and Saturday. We ask that all exhibitors wear a mask as the judges and workers will also be wearing masks. We have additional space for prep so everyone will feel comfortable preparing their roses. Our prep area will be open starting at 4:00 A.M. until 10:00 A.M. Judging will start as close to 10:00 A.M. as possible. Our show will be open to the public following the ribbon cutting ceremony at 1:00 P.M. Awards will not be able to be picked-up until Saturday at 4:00 P.M.

For those wanting to order roses, Jim Mills will be here so call him and place your order. Jim is usually here by 10:00 A.M. on Friday.

The new Marriott will be open mid-March for those of you that want to stay there. The Marriott is about one block away from the show. You can call and make your reservations now by calling the corporate office or if you can't get through you can call the Hampton Inn in Thomasville, and they will take your reservation for the Marriott as they are owned by the same corporation. I was told today in the meeting with the city that people are already making reservations.

If you need a schedule prior to the show please contact Mary Maud Sharp at wjmsharpe@aol.com or 1-851-878-9625. If you are planning to do arrangements please contact me at iamjomax@rose.net or -1-229-403-1419 so that I can make sure we have adequate space.

We are looking forward to seeing all of you in April.

Joanne Maxheimer/ Gail Altman
Thomasville Rose Society



DSD Arrangement Judges



By Sandy Dixon

sandyfdixon@comcast.net

Vaccinations are coming! That's good news. In the meantime, do everything you can to stay well – MASK UP, wash hands frequently, and keep your distance. So far, my husband and I are OK. I don't go anywhere that isn't necessary. Of course, that means we're not having a lot of fun. We have patience though. I plan on seeing my son again in 2021. It's been 14 months since I flew to Texas. There have been a few tears, I must admit. I keep those to myself and concentrate on laughs when I text or talk to him.

So, until I'm vaccinated, I'll work on my roses. So many tasks to perform; prune, fertilize, replace. It's a good time to clean out the tool kit. I'm sure I need to oil and hone the clippers, loppers, and saws. I'm saving for the trip to Milwaukee in September.

While we're in recess, try a style of floral design with which you are not completely comfortable. It takes practice to be good at almost anything. If you like it, the judges probably will, too.

Here's to you, my dear friends – Happy Holidays! I toast to your health.

My contact information is:

Sandy Dixon, sandyfdixon@comcast.net,

6181 Deepwood Dr. E.,

Jacksonville, FL 32244-2621.

904-778-2887, c. 904-521-6274.

Sandy





Consulting Rosarian Report

By **Linda Schuppener**, *Master Rosarian!*
678-895-3945, linda2742@comcast.net

As I have written before, these quarterly articles certainly seem to come up much more frequently than quarterly, and always catch me unprepared to recollect what happened in the last quarter! I can recollect this go round – NOTHING! Well, I think people sheltering at home are in their yards and more interested in roses and gardening in general. That is a great thing!

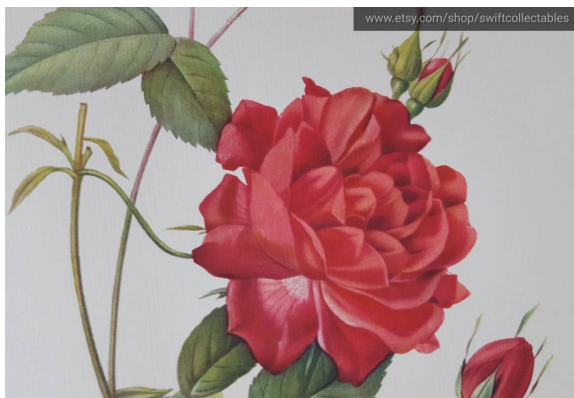
We are still virtual for meetings, conventions and CR schools, but it's not a bad thing since participation in these events appear to be higher than "in attendance" functions. The CR School attendance topped out at one point with 625 attendees! This attendance has been particularly impressive, and it shows people are eager to continue to learn about roses, albeit from their homes and personal private space.

Our virtual CR School held during the month of February, produced two new Consulting Rosarians for our Deep South District. Congratulations to **Angela Carter** and **Kelley Fitzgerald**! We all in the DSD look forward to meeting you in person one of these days to congratulate you! If you have questions, please feel free to reach out to any of our CRs and MRs. Helping our fellow CRs, especially newbies, is primary!

For those who have e-mailed about whether there is a 2020 CR annual report, we are pretending there was no 2020! No report is required for the 2020 year. If you care to send an annual report, just pull up a previous year and fill it out. We are fairly confident not many rose consultations or events took place, but if you were lucky enough to consult – possibly via a virtual connection – then by all means, let me know what happened in your 2020!

Look forward to "seeing" you a virtual event near you!

Linda Schuppener



From the Treasurer

By Kay Harrell, *Master Rosarian*
kay@fairmarsh.com, 912-634-0323



Bravo!! To: Augusta RS, Birmingham RS, Bradenton-Sarasota RS, Central Florida Heritage RS, Huntsville/Twickenham RS, Palm Beach RS, Pensacola RS, Ramer RS, South Metro RS, Savannah RS, and Wiregrass RS - you have all sent in your annual DSD dues for 2021!

If your rose society is NOT listed above, PLEASE encourage your society to send in its dues right away! There are approximately 25 local societies in the DSD but to date, only the above 11 have sent in their dues.) That means that 14 local societies have not yet sent in their 2021 Dues!

FYI - According to the DSD By-Laws, each local society's Annual Dues are due by the **end of May**. These annual dues or if you prefer, *contribution*, are used to pay the nominal but ongoing expenses of the DSD. (Local societies with 100 or more members are asked to pay \$50/year and those with less than 100 members are asked for only \$25/year.)

Thank you,

Kay Harrell, DSD Treasurer
121 Shore Rush Circle
St. Simons Island, GA 31522
kay@fairmarsh.com, 912-634-0323



What's New on the Web?



By **Chris VanCleave**, *Master Rosarian*

941-504-3897

roseguy.pfp@gmail.com

Here are the newest changes to our Website

- Site Structure Updates:
- History of the DSD is now under the Library

tab

- Special Rose Posts is now under the Library tab
- New Material from the 2020 Mid-Winter Meeting
- **See The Following Tabs posted on February 15, 2020:**
- Photo Gallery for the 2019 Photo Winners
- Saturday January 18 Presentations located in the DSD Library & Photo Gallery
- CR Class Presentations
- **In the Upcoming Events Tab:**
- Important Updates to 2020 Rose Events:
- Please get your Rose Show/Event Information to [Chris VanCleave](#) [Bet Sobon](#) as soon as you can.
- **In the Special Rose Posts Tab:**
- Sharing Roses — When Shouldn't We?
- By Wayne Myers
DSD Master Rosarian
- **ARS GREAT GARDEN RESTORATION**
- Read and Act on this great program.
- This document will give you an excellent set of notes from our District Directors Presentation at the Mid-Winter Meeting and all the material necessary to join the program.
- Cindy's Multimedia program presented at the DSD Meeting is located here as well.
- Ralph Stream gives us some sage rose advice
See Ralph's 2 great articles in Special Rose Posts

- **In the Organization Tab:**
- *The Local Society list of Presidents or Membership Contacts and their Location (City & State), web addresses has been **revised** by Sara Coleman our DSD Secretary as of May 2020.*
Please keep Sara notified of President or other contact changes. alsara.coleman@att.net
- The 2019 Active Judges List was updated On September 6, 2019
- Note: Local Societies please review your listings in the Local Societies Tab and submit any changes.
- Call or Send a note to Sara Coleman DSD Secretary 678-4324792 Or alsara.coleman@att.net
- **In the DSD Bulletin Tab:**
- All Bulletin Information and Archives are now in a single location
– The Bulletin Tab is now on the Home Page
- **In the Consulting Rosarian Section:**
- The CR School Tab has 2 of the great talks from the 2020 Class. These should be useful to all rosarians especially active CRs. Other talks will be posted as received.
- THE ARS Board approved a change from 3 years to 2 years required as a member of the ARS to become a Consulting Rosarian!!!!
- A new form is available if you want to conduct a CR Class locally. It is posted in the CR Section.
- A reminder that the CR site has the information and application for those CRs who have served as an active CR for 10 years and are now eligible to apply for Master Rosarian status. This material was reposted with ARS modifications in early 2018. If you are a CR and we didn't post your name or if other information about your CR efforts needs changing please contact Linda Schuppener (CR Chair) .
-



James & Daisy Mills



601-648-2908

Fortuniana Grafted Roses

Hybrid Teas – Exhibition Varieties & Old Favorites –
Floribundas and Climbers

New for 2021!

Even more Fortuniana-grafted exhibition minifloras and miniatures.

We will have David Austin Roses on Fortuniana rootstock, and own-root Old Garden Roses. Visit our Website or

Contact us for our 2020 List of Available Varieties!

Visit our Website or Contact us for our 2012 List of Available Varieties!

1260 Chicora River Road
Buckatunna, MS 39322

www.kandmroses.com

601-648-2151 (fax)
info@kandmroses.com



JOIN THE AMERICAN ROSE SOCIETY

www.rose.org or (800) 637-6534

Which Membership should I choose?

- Individual Membership is for one person younger than 65 years of age.
- Joint Membership is for two members of the same household. All the benefits of membership are enjoyed by both, but only one magazine is delivered to the household.
- Senior Membership is for one person over the age of 65.
- Senior Joint Membership is for two members of the same household, one of whom is over the age of 65. All the benefits of membership are enjoyed by both, but only one magazine is delivered to the household.
- Canadian Membership is for one person residing in Canada.
- Canadian Joint is for two members of the same household residing in Canada. All the benefits of membership are enjoyed by both, but only one magazine is delivered to the household.
- International Membership is for one person residing outside the United States or Canada.
- International Joint is for two members of the same household residing outside the United States or Canada. All the benefits of membership are enjoyed by both, but only one magazine is delivered to the household.
- Associate Membership if the main member of the household is a Lifetime Member; or if you have more than two adults in your household who wish to belong to the ARS, please choose this category of membership.
- Youth Membership is for one person under the age of 16. Youth members enjoy all* the benefits of membership, including a special quarterly e-newsletter, but do not receive the magazine. (*Youth members are not eligible to vote.)
- Lifetime Membership is for one person under the age of 65 who wants to enjoy the benefits of membership in the ARS for their lifetime.
- Senior Lifetime Membership is for one person over the age of 65 who wants to enjoy the benefits of membership in the ARS for their lifetime.



Trial membership in the ARS! An \$86 value for just \$10! You will receive two issues of the beautiful American Rose magazine, your member ID card; allowing you discounts with our Member Benefit Partners, along with free or discounted admission to more than 200 gardens and arboreta across the country.

Deep South District Officers & Committee Chairs, 2018-2021

Director

Cindy Dale

306 Wintney Way, Peachtree City, GA 30269
770-631-3885,
rosepro@bellsouth.net

!

Vice Director

Ray Guillebeau

4504 Ish Brant Rd. W Jacksonville, FL 32210
904-728-5957
kokosrose1@gmail.com

!

Secretary

Sara Coleman

346 Clyde Court, McDonough, GA 30252
678-432-4792,
alsara.coleman@att.net

!

Treasurer

Kay Harrell

121 Shore Rush Circle, St. Simons Island, GA 31522
912-634-0323,
kay@fairmarsh.com!!

!

Nominations and Awards Chair

Jean Stream

21465 NW 39th Terrace, Micanopy, FL 32667
352-591-4474
streamj@gmail.com!

!

Bulletin Editor

Bet Sobon

2388 Coinsborough Way, Buford, GA 30518
770-561-6846,
betsobon@gmail.com

!

Chair of Horticulture Judges

Joanne Maxheimer

505 Dillon Road, Thomasville, GA 31757
229-403-1419
iamjomax@rose.net

!!

Chair of Arrangements Judges

Sandy Dixon

6181 Deepwood Drive East, Jacksonville, FL 32244
904-778-2887, 904-521-6274
sandyfdixon@comcast.net

!

Chair of Consulting Rosarians

Linda Schuppener

5145 Daniell Mill Rd. Winston, GA 30187
678-895-3945
linda2742@comcast.net

!

Exhibitors' Coordinator

Glenn Schulman

3585 Chastain Way, Pensacola, FL 32504
850-438-5269

Trophy Committee

Ralph Stream

21465 NW 39th Terrace, Micanopy, FL 32667
352-591-4474
streamj@gmail.com

!

Webmaster

Chris VanCleve

webmaster@redneckrosarian.com

!

Site Selection Committee

Chris Woods

5210 Willow Ridge Drive, Woodstock, GA 30188
770-309-6302,
cewoods1268@yahoo.com

Roses in Review Chair

Jill Haisten

334-201-6800,
jill.haisten@gmail.com

Bronze Medal Coordinator

Kathy Porter

352-259-8196
kathymporter@comcast.net

!

!

Historian

Cathy Farmer

135 Creekview Drive, Woodstock, GA 30188
770-617-5426,
duancath@bellsouth.net

Parliamentarian

Karen Prevatt

P.O. Box 310, Wimauma, FL 33598-0310
813-634-1830,
kprevatt@verizon.net

!

Photo Contest Coordinator

Paul Colombo

207 Oakleaf Trail, Ball Ground, GA 30107
313-205-3420,
pjcolombo1@gmail.com

!

-!!

!

Upcoming Events

- Mar 27 **Virtual DSD 2021 Mid-Winter**
See info on page 3
- April 23-24 **Thomasville Rose Society**
Thomasville Rose Show (see info on page 5)
Mary Maud Sharp at wjmsharpe@aol.com or 1-851-878-9625.
Arrangements: iamjomax@rose.net or -1-229-403-1419
- May 8 **Tampa Rose Society Rose Show**
Tampa's WestShore Plaza
Please contact Manny Lopez at iamlopez111@gmail.com
- May 29 **Huntsville Twickenham Rose Society Annual Rose Show**
Summit Crossing Community Church
7200 Governor's West
Huntsville, Alabama 35806
Jill Chapple greenmtnroses@comcast.net

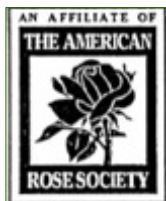
Material for next issue
of The Bulletin is due on
May 1st 2021. Please send your input
early!

To ensure that your event is listed in the next issue's Upcoming Events, please send the information to Bet Sobon, Editor, 770-561-6846, betsobon@gmail.com, before February 1st, 2021

Visit the DSD Website at <http://deepsouthdistrict.org>



<https://fb.me/DeepSouthDistrictAmericanRoseSociety>



The DSD Bulletin
Bet Sobon Editor
2388 Coinsborough Way
Buford, Georgia 30518



The Bulletin

2020 Print Subscription Form

Name(s) _____

Address _____

City/State _____ Zip _____ - _____

Phone _____

The Bulletin is distributed in color by e-mail to all members of local rose societies within the Deep South District, and to all American Rose Society members residing in Alabama, Georgia, and Florida who have a current address on file with ARS. If you cannot access the newsletter by e-mail, you may request a printed copy for a charge of \$20 per year.

Make check for \$20 payable to "The Deep South District" and forward to:

Kay Harrell, DSD Treasurer

121 Shore Rush Circle, St. Simons Island, GA 31522